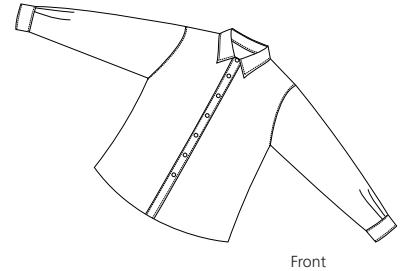
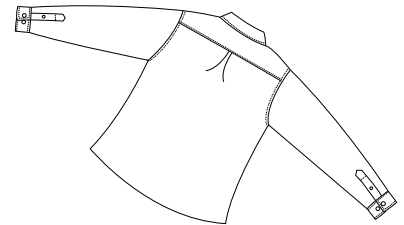


Ladies Denim Shirt

PORT | AUTHORITY®



Front



Back

L600D

- * 6.5-ounce * 100% cotton denim * Stonewashed * Double-needle stitching
- * Back pleat * Adjustable cuffs * Open collar * Button-through sleeve plackets

Care Instructions:

Machine wash cold with like colors.
Do not bleach.
Tumble dry low.
Warm iron if necessary.

Finished Measurements in Inches

Size	XS	S	M	L	XL	XXL	Plus 1X	Plus 2X
Chest	18.5	20	21.5	23	24.5	26	27.5	30
Body	26	26.5	27	27.5	28	29.75	31.5	32
Sleeve	31.25	32	32.5	33	33.5	34	34.25	35

Chest width measured 1" below arm hole. Body length measured from back neck seam to hem.
Sleeve length measured from center back to hem.

Colors



Faded Denim

Please Note:

Colors shown are approximate and for reference only. No PMS match is available on a two tone color. For exact match, returnable samples and grommeted samples are available.

**Due to a special washing process, colors may vary*

Color Chart

Color	Faded Blue
Textile PMS	No Match
General PMS	No Match